



CLIFTON COMMUNITY partnership Update



January 2007
Vol. 2, Issue 1

Urban Design: Progress in the Making



South Campus Gateway (left) is a new destination along High Street in Columbus, Ohio that includes entertainment, retail, residential and public parking, and serves The Ohio State University community. This project, designed by Goody Clancy, replaced distressed businesses like those shown in the photo on the right.



Get ready to give your opinion. In January, the Clifton Community Partnership (CCP) and Goody Clancy are hosting two community charrettes. Participants can attend one or both sessions on Jan. 26 from 6:30 to 9 p.m. or Jan. 27 from 10 a.m. to 3 p.m., at Druid Hills High School. Additional community

trees and planters, street-level retail and how parking is handled.

"No one knows better about how Clifton, North Decatur and Clairmont roads work for pedestrians than people who live, work and study in the neighborhood," Cooke added. "Come out and bring a friend. We want everyone's ideas."

Participants will work in small groups

charrette (shuh•ret') n. 1. a fast-paced, highly participatory event in which people collectively create solutions to design problems; 2. any collaborative session in which a group of designers draft solutions to a design problem.

charrettes will be held later in the spring. These meetings continue the urban design conversation that began in November.

"We're excited," said Bryan Cooke, executive director of the CCP. "This is a chance for everyone — kids, too — to roll up their sleeves and visualize ideas about how to make this area much more walkable, more vibrant."

This project will support the CCP focus on streets for people, not just cars. And streetscape design is all about the details — sidewalk dimensions, street lighting, building finish materials, pedestrian crossing features, landscape elements like

with designers from Goody Clancy. Each work group will present its recommendations, and everyone will critique the presentations.

"Charrettes are great for generating a design solution quickly, drawing from the knowledge and interests of all," said David Dixon, leader of the Goody Clancy team. "It's messy and chaotic, but somehow, solutions emerge that everyone can get behind."

Visit www.cliftoncommunitypartnership.org to catch up on earlier urban design meetings and to check future meeting dates and times.

Save the Date!

Urban Design Charrette
Friday, Jan. 27,
from 6:30 to 9 p.m.
and Saturday, Jan. 28,
from 10 a.m. to 3 p.m.
at Druid Hills High
School.

Zoom Around on the New, Improved CCP Web site

With a new logo for the Clifton Community Partnership, it was time spruce up the CCP Web site. The new easy-to-navigate site launched on Dec. 14.



launched on Dec. 14.

The CCP site will help connect neighbors, business and civic leaders with changes in the Clifton community. The new site allows

interactive communication within the community and serves as an accessible space for photos, drawings and essential documents.

What do you think? Please take a look at the new site, then visit the "Keep Us Informed" page and see the information under "Community Input." Your feedback is welcomed www.cliftoncommunitypartnership.org.



Goodbye Emory Campus Water Tower

Emorey's distinctive water tower is gone. For 73 years, the tower has been a campus landmark, but due to structural safety concerns, it has not held water since the 1980s. Recently, campus officials started removing the 120-foot structure.

The water tower needed improvements that were estimated to be several hundred thousand dollars, and the expenses wouldn't be confined to this year alone. Maintenance would be an ongoing need.

In keeping with Emory's sustainability initiative, the University will recycle the considerable amount of steel in the tower.

Fraternity Row, former home of the water tower, is being realigned during the next six months and has already been renamed "Eagle Row." The realignment will accommodate a new housing village for freshmen and will allow smoother traffic flow along the edge of campus.

CCP Advisory Group Meeting Recap

Mike Mandl, Emory's executive vice president for administration and finance, opened the November 30 Clifton Community Partnership Advisory Group meeting with an update on the Clifton Road mixed-use project. (Please see the "Architect Selected" article in this newsletter for a mixed-use project update.)

Mandl said Emory is continuing to purchase homes on the north side of North Decatur Road from Clairmont Road to Ridgewood Drive as the first step in a long-term plan to create an attractive, pedestrian-friendly and cyclist-friendly approach to campus.

Designs for the plan will emerge from the urban design study. Emory will purchase these properties at market rates as interested owners want to sell their properties. Emory representatives will meet with homeowners on North Decatur Road in early 2007 to discuss the matter.

Bryan Cooke, executive director of the CCP, reported that the first "ivy pull" at the 1164 Clifton Road park was well attended in November. A second "pull" was scheduled for Saturday, Dec. 16. Ciannat Howett, Emory's director of sustainability initiatives, is leading the planning for the new park. A fundraising campaign, in conjunc-

tion with the Druid Hills Civic Association and Park Pride, will begin in December. The park will open in April.

The urban design study was officially launched with the introduction of David Dixon, of Goody Clancy, the firm selected to lead the study. Dixon opened the discussion with a short presentation on many of the trends and opportunities facing communities as they balance decisions on preservation and change. The advisory group and members of the community will work closely with the urban design team during the planning process.

Enrich Your Winter Evenings at Emory



Evenings at Emory offers more than 150 unique leisure courses, including art, history, language, self-development and many more. The schedule for upcoming events is below. A full list and additional course information can be found online at the Evening at Emory website, www.EveningAtEmory.org or by calling 404-727-6000.

Winter Comfort Food with Mary Moore of Cook's Warehouse: Come learn how to prepare lemon ginger roasted chicken with pan gravy, wild mushroom and asparagus risotto, citrus salad and Grand Mariner soufflé. Instructed by Mary Moore, owner of the Cook's Warehouse, cooking instructor and consultant.

- One session: \$65
- Monday, Feb. 12, 7 – 9 p.m.

Louvre in Atlanta: Welcome the wonderful collections of paintings, sculptures and artifacts on loan from the Louvre Museum in Paris. This exhibit focuses on the works of art collected by kings of France during the late 18th century. Instructed by Susan Stratton, B.A., art historian.

- Five sessions: \$99
- Jan. 29–Feb. 26, 7– 8:30 p.m.

"The Great Gatsby": Experience: the Roaring '20s as Atlanta Ballet presents John McFall's interpretation of F. Scott Fitzgerald's "The Great Gatsby." Join an Atlanta Ballet dancer and production staff member for an informative and entertaining evening discussing the story, choreography and history of "The Great Gatsby." Instructed by Dan Allcott, music director, Atlanta Ballet Orchestra.

- One session: \$79
- Monday, Jan. 29, 7 – 8:30 p.m.; performances Feb. 8 – 17.

Architect Selected for Mixed-Use Project

Cooper Carry has been selected to design the proposed mixed-use project across from CDC on Clifton Road. The project will include a mix of retail shops and residential units.

Cooper Carry is highly regarded for its place-making design. The firm's experience ranges from university facilities to office buildings, residential areas to retail shops. The company's

designs exhibit an understanding of the people and groups who use a structure, and honor the landscape in which a structure sits.

Cooper Carry creates environments that connect people and places, making communities more valuable, something it calls "connective design." For more information, visit www.coopercarry.com.

Emory will work with Cousins Properties to develop the site. Current plans call for a mix of rental and for-sale units. The project will house a significant number of residents who work within the Clifton corridor and the expectation is that most of those employees will walk, cycle or take alternative transportation to and from work.

Get Your News Faster

Don't like waiting for the Community Update to be delivered to your mailbox? Sign up to receive electronic copies of the Community Update by visiting www.cliftoncommunitypartnership.org.

Get Involved!

For information about what's happening in specific neighborhoods within the Clifton community, please visit some of the following websites:

- Ashford Park: www.ashfordpark.org
- Clairmont Heights Civic Association: www.clairmonthights.org
- Lake Claire Neighborhood Association: www.lakeclaire.org

Who we are...

For more detailed information on any of the articles inside the Community Update, please contact:

Bryan Cooke, executive director for Clifton Community Partnership
bryan.cooke@emory.edu, 404.727.9341

Betty Willis, Emory's senior associate vice president for governmental and community affairs
betty.willis@emory.edu, 404.727.5312

David Payne, Emory's director of communications for campus planning and outreach
dpayne2@emory.edu, 404.727.0996

Five Questions

A snapshot of questions for leaders in the Clifton community



Fred Boykin,
District 1 Decatur
City Commissioner

CCP: How did you become such a biking enthusiast in a city that's not known for being "cyclist-friendly"?

Fred Boykin: I started selling bikes to friends in the early 1970s while still a student at Emory. At the time, cycling was gaining popularity. As cycling grew in numbers and sophistication, my business, Bicycle South, grew too.

CCP: What can be done to improve cycling conditions in the Clifton community?

Boykin: To improve cycling conditions, you need to think like a bicyclist. You need to provide the facilities and encourage people to use them. By that I mean signs need to indicate cycling instructions and not just parking instructions – how I can get from Point A to Point B by bike, as well as by car; maps should reference travel time so that cyclists and pedestrians can gauge their trip; secure and accessible bike parking should be provided. Put the

bike parking out front, close to the entrance of the building. Make bike parking visible and easy to access.

CCP: What are your thoughts on bike lanes along Clifton and North Decatur roads?

Boykin: Bike lanes usually share the road with traffic, so the creation of safe bike lanes is more difficult to develop than pedestrian sidewalks, which are separate from the roadway. You need to consider the width of the bike lane, pavement condition, and the nature of the vehicular lanes adjacent to it, such as the vehicle speed and number of travel lanes. Right-of-way through intersections should also be taken into consideration and that can get tricky around busy intersections. Bike lanes may not always be easy to develop, but they're worth it.

CCP: What is your involvement with the "Safe Routes to School" program?

Boykin: Safe Routes to School is a federal program to help get more school children bicycling and walking

to and from school safely. Georgia will receive approximately \$16 million over the next four years to invest in infrastructure improvements like sidewalks, bicycle and pedestrian crossings and traffic calming improvements, as well as bicycle education, awareness and safety programs. Our advisory committee is working with a dynamic coalition that includes school principals, teachers, police, local officials, engineers, parents and students.

CCP: Why is the American bicycling culture so different from, say the European bicycling culture?

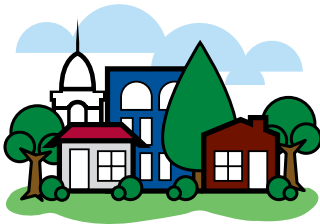
Boykin: Bicycling is an accepted form of transportation in Europe. For example, in the 1970s, the Netherlands made a conscious effort to develop the infrastructure that allows widespread cycling. Now, they not only have the infrastructure but also popular acceptance of cycling as a regular means of transportation. We can do the same, especially in densely populated areas around Decatur and in the Clifton community.



EMORY
UNIVERSITY

1762 Clifton Rd., Plaza 1000
Atlanta, GA 30322

NONPROFIT ORG
AUTO
U.S. POSTAGE
PAID
ATLANTA, GA
PERMIT NO. 3604



CLIFTON COMMUNITY
partnership
Update

Emory University Communications
Campus Planning and Outreach
404.727.9477, kvgray@emory.edu

The *Clifton Community Partnership Update* is a monthly newsletter published by Emory University's Office of Communications, Campus Planning and Outreach, to share information and ideas among stakeholders working to improve the quality of life in the Clifton community. Feedback and story ideas are welcomed!